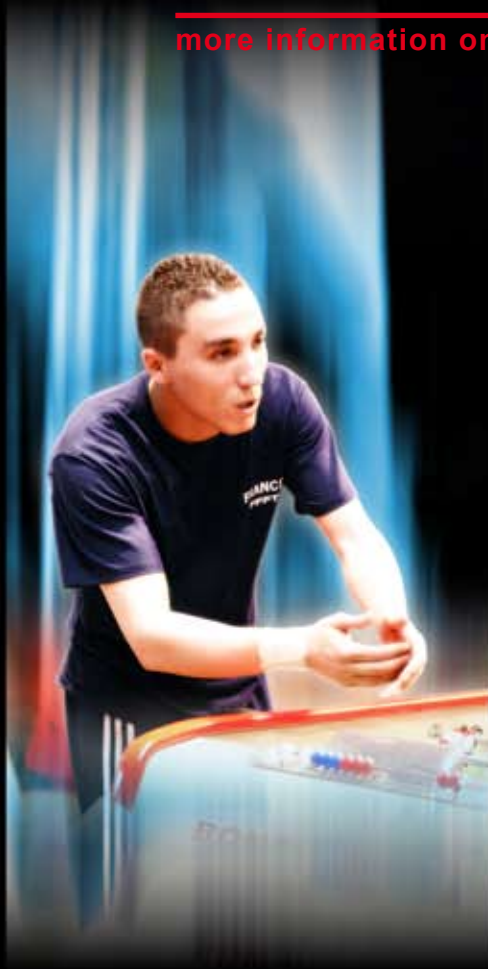


accomodation
5-8 JANUARY 2012
COMPLEXE MANGIN BEAULIEU - **nantes**
more information on www.table-soccer.org



EN LIVE SUR



THE FFTF AND THE ITSF PRESENT

TABLE SOCCER

nantes 2012 - FRANCE

WORLD CUP

FREE ACCESS

01 2012 WORLD CUP PARTNER HOTEL : PARK&SUITES NANTES CARRÉ BOUFFAY***



The apart-hotel Park&Suites Elegance Nantes Carré Bouffay is composed of 126 apartment suites, from studios to 2-room apartments well-situated in Nantes City centre in the lively area of Bouffay near tramline 2 (direct line to go to the sporting area Mangin Beaulieu), the TGV train station, bars, restaurants and shops. Each apartment is well-equipped (kitchenette..). The building combines tradition and contemporary styles, with an impressive facade, exposed stonework at the reception and a truly magnificent glass house that lights up the breakfast room.

Accommodation Facilities

- Free Wi-Fi Internet Access
- Fitted kitchen in each apartment
- Bathroom with bath or shower
- Telephone
- LCD television with satellite channels
- Several languages spoken at reception
- 24-hour reception, 7 days a week

Rates (breakfast not included)

Minimum stay 4 nights (no cleaning service)

- Single – Twin or Double : 67 € per night
- 2 Suites room with 2 Double Beds : 86 € per night

From 1 to 3 nights (daily cleaning)

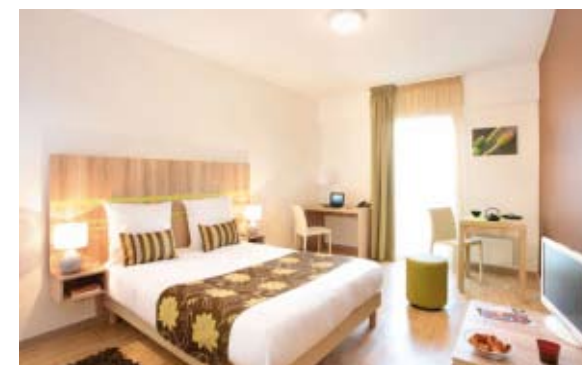
- Single – Twin or Double : 81 € per night
- 2 Suites room with 2 Double Beds : 100 € per night

Breakfast : 10 €/person

Occupancy tax: 0.85 € per day and person

Enjoy this exceptional offer and preferential rates for the World Cup and book now !

✉ : 4 rue des petites écuries
44000 Nantes
FRANCE
nantes@parkandsuites.com
☎ : 02 28 08 10 20



➔ p.2

02 CAMPANILE NANTES SAINT JACQUES***

Ideally located on the Ile de Nantes, the Campanile Nantes Centre Saint Jacques hotel offers all the advantages of a city-centre hotel, with added tranquillity. The Campanile Nantes Centre Saint Jacques hotel welcomes you 24 hours a day, seven days a week. Our "Nouvelle Génération" hotel boasts 107 modern rooms in a tranquil environment, plus all the services you need for a pleasant and comfortable stay.

Hotel Amenities

- Free and unlimited Wi-Fi access with WiMAX technology
- Room Next Generation
- Air-conditioned rooms
- 5 minutes from the sporting area Mangin Beaulieu by bus (line 4 busway).



Rates (breakfast not included)

From friday to sunday :

- Single room : 34 € per room*
- Double room : 34 € per room*

Before friday :

- Single room : 55 € per room*
- Double room : 55 € per room*

*With sport licence

Occupancy tax: 0.85 € per day and person

Breakfast : 9€

Underground parking : 6€

Contact :

✉ : 16 Boulevard Emile Gabory
44200 Nantes
FRANCE
nantes.centre.stjacques@campanile.fr

☎ : 02 72 65 65 65



03 OTHER HOTELS

BRIT HOTEL BELFORT **

✉ 1 Rue de Belfort
44000 NANTES
☎ +33 (0)2 40 47 05 57
@: belfort@brithotel.fr

Rooms from 50 € to 100 €. Breakfast: 8 €
Non-Smoking area
Free Wi-Fi access

Distance to tournament venue:

15 minutes walk
18 minutes by tramway
Tram n°2 Go to the stop to Gare Pont rousseau
and stop at Wattignies

MERCURE ILE DE NANTES ***

✉ 15 Bd Alexandre Millerand
44200 NANTES
☎ +33 (0)2 40 95 95 95
@: H0555@accor.com

Single room : 70 €
Double room :80 €
Triple room : 90 €
Non-Smoking area
Free Wi-Fi access

Distance to tournament venue:

25 minutes walk
13 Minutes by bus
Go to the stop "Sébilleau" Bus n° 24 to "Pirmil"
and stop at "Leygues"

NOVOTEL Cité des Congrès ***

✉ 3 rue de Valmy
44000 NANTES
☎ +33 (0)2 51 82 00 00
@: H1571@accor.com

Single room : 70 €
Double room :80 €
Triple room : 90 €
Breakfast included
Non-Smoking area
Free Wi-Fi access

Distance to tournament venue:

20 minutes walk
5 Minutes by bus
Go to the stop "Cité des Congrès" Busway n° 4 to
Porte de Vertou and stop at "Ile de Nantes"

ALL SEASONS NANTES SUD ***

✉ 1 rue Ile de Mace
44400 REZÉ
☎ +33 (0)2 40 95 95 95
@: H7054@accor.com

Rooms from 50 € to 105 €. Breakfast: included
Non-Smoking area
Free Wi-Fi access

Distance to tournament venue:

35 Minutes walk
20 Minutes by bus and Tramway
Go to the stop "Haute ile" Bus n° 36 to Grêneraie
and stop at "Pirmil"
Tram n°3 to Marcel Paul and stop at "Wattignies"

Novotel Bords de Loire : For your information, the Novotel Bords de Loire is not partner of the 2012 Table Soccer World Cup.
So bedrooms are more expensive this year.