

**6-9 JANUARY 2011**

MANGIN BEAULIEU SPORTS COMPLEX - **nantes**

information on [www.francebabyfoot.com](http://www.francebabyfoot.com)

**INFORMATION PACKAGE**

FRANCE  
FFFT

THE FFFT PRESENTS

**TABLE SOCCER**

**nantes 2011**

**WORLD CUP**

WITSA  
COMPETITION

BONZINI

FRANCE

# TABLE OF CONTENTS

## 01 INTRODUCTION

*p3 World Cup and World Championships*

*p3 Important dates*

## 02 TOURNAMENT INFORMATION

*p4 Tournament venue*

*p4 Welcome party*

*p5 An environment-friendly competition*

*p6 Highlights*

*p7 Competition schedule*

*p8 Dress code and table picks*

*p9 World Cup groups*

*p10 Team representatives and referees*

*p11 TST handle change system*

*p12 World Cup format - Teams*

*p13 World Cup format - Qualification*

*p16 Eurosport - broadcasting partner*

*p17 World Cup format - Elimination*

*p19 Kozoom - production partner*

*p20 World Championships format - Qualification and elimination*

*p21 Prizes*

## 03 CONTACT INFORMATION

*p22 ITSF*

[www.itsfworldtour.com](http://www.itsfworldtour.com)



*USA Men's Team - 2010 world champion*



*France Women's Team - 2010 world champion*



# 01 INTRODUCTION

## WORLD CUP AND WORLD CHAMPIONSHIPS

The International Table Soccer Federation (ITSF) and its partners are happy to introduce the

### 2011 ITSF World Cup

The organization of this event has been delegated to the French table soccer federation – the FFFT.

**4 separate team events:  
Men's, Women's, Junior and Senior**

The 2011 World Cup will also feature the 2010 **World Championships**, during which players will compete in **Singles and Doubles** in the following categories:

**Men, Women, Junior and Senior**; as well as the **Disabled Doubles category**, where players in wheelchairs compete on specially designed tables.

## IMPORTANT DATES

### World Cup

National federations must confirm that they would like to take part in the World Cup and must announce the choice of the table for each team by:

**September 30th, 2010**

National federations must announce their team members by:

**October 31st, 2010**

### World Championships

Check [qualifying conditions](#).

As for national champions of each ITSF member federations, they must :

- either qualify in the official national qualifying tournament in their country
- OR, if there is no national championship in their country, they must be announced by national federations by:

**October 31st, 2010**

This is also the deadline for announcing the choice of tables for all players.

When there is no qualifying event in a country, then the selection process must take place under fair, objective and democratic rules.

## 02 TOURNAMENT INFORMATION

### TOURNAMENT VENUE

**Nantes** (pop. 550 000) is France's sixth largest city, and the largest city in western France.

Nantes is just 2 hours from Downtown Paris by high speed train (TGV) which runs every hour. Also the TGV runs straight from the Roissy-Charles de Gaulle international airport to Nantes city centre in 3 hours.

Air France, Ryan Air and Easy Jet run daily flights to Nantes from numerous countries.

For more information on Nantes, visit the website of the [tourism information centre](#).

The City of Nantes, the Department of Loire-Atlantique and the Pays-de-la-Loire Region are proud to host this major event for the second year, and will be happy to welcome all qualified players and national teams to Nantes.



City of Nantes

[www.nantes.fr](http://www.nantes.fr)



Loire-Atlantique Department

[www.loire-atlantique.fr](http://www.loire-atlantique.fr)



Pays de la Loire Region

[www.paysdelaloire.fr](http://www.paysdelaloire.fr)

### WELCOME PARTY

**Wednesday, January 5th**  
from 8:00 pm to 1:00 am

**Address:**

**Complexe  
Mangin-Beaulieu  
2 rue Louis Joxe  
NANTES, FRANCE**

The FFTF is happy to invite all competitors to a «Welcome Party» on Wednesday evening which will take place at the [Novotel Bord de Loire](#).

A buffet will be served and playing tables will be available for competitors to train.

**Please note that the tournament hall will be closed that day.**

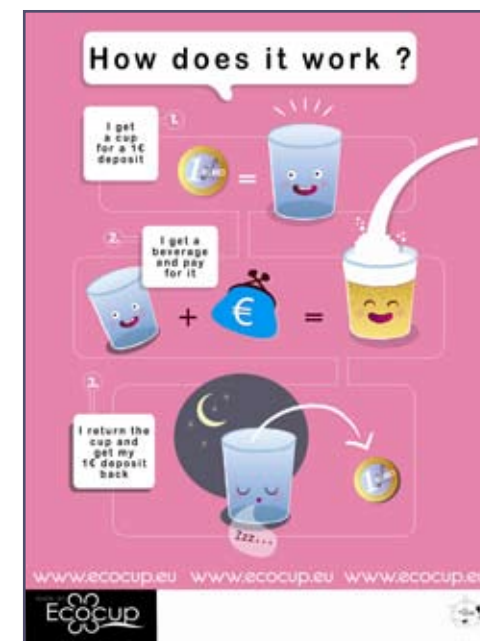
As this party is for invited guests only, each ITSF member federation must confirm their attendance and let us know how many competitors will be there that evening. Please confirm by mailing the ITSF office as early as possible.

## AN ENVIRONMENT FRIENDLY COMPETITION

The ITSF is committed to adopting an eco-responsible attitude, taking into account environmental stakes when organizing the World Cup, and also in the daily functioning of its headquarters' offices.



eco  responsible



## HIGHLIGHTS

**Wednesday, January 5<sup>th</sup>, 8:00 pm** - Welcoming party for players, partners and the press

**DAY 1 / Thursday, January 6<sup>th</sup>**

- 09:00 am:** Singles events - qualification
- 01:00 pm:** Doubles events - qualification
- 04:00 pm:** Singles events - elimination
- 07:00 pm:** *Ph. D. Tournament (VIP room)*
- 07:00 pm:** Women's, Junior and Senior Singles - finals
- 10:00 pm:** Men's Singles - final

**DAY 3 / Saturday, January 8<sup>th</sup>**

- 09:00 am:** Team events - qualification (continued)
- 10:00 am:** *Country Road Take Me to Town Tournament (VIP room)*
- 02:00 pm:** *Foos on Wheels Tournament (VIP room)*
- 03:00 pm:** Award Ceremony (Singles and Doubles events)
- 04:00 pm:** Team events - elimination
- 06:30 pm:** Men's World Cup - 1/4 finals  
Women's, Junior and Senior World Cups - semi finals
- [LIVE] 09:00 pm:** Men's World Cup - last 1/4 final

**DAY 2 / Friday, January 7<sup>th</sup>**

- 09:00 am:** Team events - qualification
- 01:30 pm:** Doubles events - elimination
- 05:00 pm:** Opening ceremony
- 06:00 pm:** *VIP Tournament (VIP room)*
- 07:00 pm:** Women's, Junior and Senior Doubles - finals
- [LIVE] 09:30 pm:** Men's Doubles - semi final
- [LIVE] 10:30 pm:** Men's Doubles - final

**DAY 4 / Sunday, January 9<sup>th</sup>**

- 09:00 am:** Men's World Cup - 1st semi final
- 11:30 am:** Men's World Cup - 2nd semi final
- 02:00 pm:** Women's, Junior and Senior World Cups - finals
- [LIVE] 05:00 pm:** Men's World Cup - final
- 07:00 pm:** Award Ceremony
- 08:00 pm:** Farewell party for players, partners and the press

**COMPETITION SCHEDULE****MEN'S SINGLES****Qualification**

Thursday 6<sup>th</sup>, 09:00 am - 32 qualified players

**Elimination**

Thursday 6<sup>th</sup>, 04:00 pm

**Final**

Thursday 6<sup>th</sup>, 10:00 pm

**WOMEN'S SINGLES****Qualification**

Thursday 6<sup>th</sup>, 09:00 am - 32 qualified players

**Elimination**

Thursday 6<sup>th</sup>, 04:00 pm

**Final**

Thursday 6<sup>th</sup>, 07:00 pm

**JUNIOR SINGLES****Qualification**

Thursday 6<sup>th</sup>, 09:00 am - 16 qualified players

**Elimination**

Thursday 6<sup>th</sup>, 04:00 pm

**Final**

Thursday 6<sup>th</sup>, 07:00 pm

**SENIOR SINGLES****Qualification**

Thursday 6<sup>th</sup>, 09:00 am - 16 qualified players

**Elimination**

Thursday 6<sup>th</sup>, 04:00 pm

**Final**

Thursday 6<sup>th</sup>, 07:00 pm

**MEN'S DOUBLES****Qualification**

Thursday 6<sup>th</sup>, 01:00 pm - 32 qualified teams

**Elimination**

Friday 7<sup>th</sup>, 01:30 pm

**Semi-final**

Friday 7<sup>th</sup> - **LIVE at 9:30 pm**

**Final**

Friday 7<sup>th</sup> - **LIVE at 10:30 pm**

**WOMEN'S DOUBLES****Qualification**

Thursday 6<sup>th</sup>, 01:00 pm - 32 qualified teams

**Elimination**

Friday 7<sup>th</sup>, 01:30 pm

**Final**

Friday 7<sup>th</sup>, 07:00 pm

**JUNIOR DOUBLES****Qualification**

Thursday 6, 01:00 pm - 16 qualified teams

**Elimination**

Friday 7<sup>th</sup>, 01:30 pm

**Final**

Friday 7<sup>th</sup>, 07:00 pm

**SENIOR DOUBLES****Qualification**

Thursday 6, 01:00 pm - 16 qualified teams

**Elimination**

Friday 7<sup>th</sup>, 01:30 pm

**Final**

Friday 7<sup>th</sup>, 07:00 pm

**MEN'S WORLD CUP****Qualification**

Friday 7<sup>th</sup>, 09:00 am - 16 qualified teams

**Elimination**

Saturday 8<sup>th</sup>, 04:00 pm  
- last 1/4 final **LIVE at 9:00 pm**

**Final**

Sunday 9<sup>th</sup> - **LIVE at 5:00 pm**

**WOMEN'S WORLD CUP****Qualification**

Friday 7<sup>th</sup>, 09:00 am - 8 qualified teams

**Elimination**

Saturday 8<sup>th</sup>, 04:00 pm

**Final**

Sunday 9<sup>th</sup>, 02:00 pm

**JUNIOR WORLD CUP****Qualification**

Friday 7<sup>th</sup>, 09:00 am - 8 qualified teams

**Elimination**

Saturday 8<sup>th</sup>, 04:00 pm

**Final**

Sunday 9<sup>th</sup>, 02:00 pm

**SENIOR WORLD CUP****Qualification**

Friday 7<sup>th</sup>, 09:00 am - 4 qualified teams

**Elimination**

Saturday 8<sup>th</sup>, 04:00 pm

**Final**

Sunday 9<sup>th</sup>, 02:00 pm

**DISABLED DOUBLES****Qualification**

Friday 7<sup>th</sup>, 9:00 am  
16 qualified teams

**Elimination**

Friday 7<sup>th</sup>, 12:00 pm

**Final**

Friday 7<sup>th</sup>, 03:30 pm

## DRESS CODE AND TABLE PICKS

### ↳ Sport Dress

- Each player must have 4 “national” shirts: one for each day of the event. A jogging suit (top and bottom) is also required of all players.
- The name of the country must be clearly displayed on the players’ shirts and jogging suit; players can also add their names and country’s flag on their shirts and jogging suits, if they wish.
- Players must wear their national shirt during ceremonies and matches; players who do not abide by this rule will not be allowed to compete. Players are strongly encouraged to wear their national sport dress during the whole event, even if they don’t play every day.
- Partners in Doubles events must wear exactly the same sport dress.
- Regarding sponsor logos, we are subject to restrictions due to the broadcast of our main events on TV. For example, please note that no alcohol or tobacco brand names can be shown on Eurosport 2, and since blurring the names during broadcast would imply extra work, this could have an incidence on which matches would be chosen for the broadcast.

### ↳ Tables

- For the World Championships, qualified players and national champions must choose their table by **October 31st, 2010**, at the latest, except when national championships take place later.
- For the World Cup, national federations must announce the choice of the table for each team (the Men’s, Women’s, Junior and Senior teams from the same country can choose different tables) by **September 30th, 2010**.
- Players/teams cannot change their choice of table during the tournament. If 2 opponents/teams have chosen the same table, they will play on one



## WORLD CUP GROUPS

### Men's

#### Group A

United States  
United Kingdom  
Spain  
Japan

#### Group D

France  
Denmark  
Portugal  
South Africa

#### Group B

Belgium  
Switzerland  
Morocco  
Brazil  
Turkey

#### Group E

Germany  
Poland  
Finland  
Italy  
Slovenia

#### Group C

Czech Republic  
Slovakia  
China  
Luxembourg

#### Group F

Austria  
Netherlands  
India  
Russia  
Iran

### Women's

#### Group A

France  
United States  
Portugal  
Russia

#### Group B

Poland  
Switzerland  
United Kingdom

#### Group C

Netherlands  
Denmark  
Italy

#### Group D

Germany  
Austria  
Belgium

### Junior

#### Group A

Germany  
India  
Poland

#### Group B

Netherlands  
United Kingdom  
United States

#### Group C

Slovakia  
Switzerland  
France

#### Group D

Austria  
Portugal  
Denmark

### Senior

#### Group A

United States  
United Kingdom  
Netherlands  
Portugal

#### Group B

Germany  
Italy  
Belgium  
France

## TEAM REPRESENTATIVES AND REFEREES

### ↳ Captain, Coach and Delegate

- Each team (Men's, Women's, Junior and Senior) must designate a team captain among the team players.

Each team (Men's, Women's, Junior and Senior) can also be accompanied by a coach who will be considered as a non-playing team member; and by the delegate of the national federation who can not be a team member.

- The captain

He/she will represent his/her team; among other things, when 2 teams meet, he/she will do the coin flips.

- The coach (manager/coordinator)

The coach can not be a playing team member.

He/she will be in charge of making sure the team is well organized such as respecting the schedule of matches, the dress code, etc.

He/she will be the intermediary between his/her team and ITSF.

If there is no coach, the captain will take on the coach responsibilities.

- The delegate

He/she will be expected to attend all official meetings.

### ↳ Referees

- Each federation will provide the list of all the persons who can be called upon to referee matches during the World Cup.

They must indicate whether these persons are players or not (whatever their referee level may be : Assistant, Regional, National, International\*, International\*\*, Head Official).

- Also each federation needs to designate someone who will be the reference person for all relations with the Rules Commission regarding refereeing questions during the event.

This person can either be the coach, the delegate or a player.

## TST - HANDLE CHANGE SYSTEM



As in the 2010 WCS events, the TST handle change system will be used at the World Cup.

- All tables from all 5 brands (Bonzini, Garlando, Roberto Sport, Tecball and Tornado) will be set up without handles, so that the TST Company can install its handle adaptors on all tables one day before the tournament start.
- Competitors will play exclusively with the handles and handle change system provided by the TST Company.
- Players who do not yet have their own handles will be able to buy or rent some from the TST Company.

Visit the TST website at :

[www.tst-systems.com](http://www.tst-systems.com)

**Handles for rent:**

**2 euros per handle**

## WORLD CUP FORMAT - TEAMS

*Some changes have been implemented since the last World Cup, so please take time to read this information thoroughly.*

• 4 World Cup events will take place in the following categories:

- **Men:** 7 + 2 reserve players (minimum 5 players to make up a team)
- **Women:** 6 + 2 reserve players (minimum 4 players to make up a team)
- **Juniors (18 and under\*):** 4 + 2 reserve players (minimum 3 players) - male and/or female players can be part of a Junior team
- **Seniors (50 and over):** 4 + 2 reserve players (minimum 3 players) - male and/or female players can be part of a Senior team

*\* Please note that players who were Juniors in 2010 (born in 1992) can still take part in the 2011 Junior World Cup.*

• It is up to each federation to decide whether they want to have **reserve players** or not. These reserve players will be able to rotate with regular team members for each encounter with another team but note that no change of players will be allowed after the players list has been entered on the players' station, except in case of injury.

• It is possible to have a male Junior and/of Senior player in the Men's team (and/or a female Junior and/of Senior player in the Women's team), under the condition that it doesn't prevent the federation from having a complete Junior or Senior team. In that case, the federation can also have a Junior and/or Senior team.

• Each national team chooses 1 table, and only one, for the whole tournament - teams from the same country can choose different tables:

**BONZINI, GARLANDO, ROBERTO SPORT, TECBALL and TORNADO.**

• When 2 teams meet, they have 2 tables at their disposal. The **team captains** flip a coin twice :

- the team who wins the first flip gets to choose the side of the table they will play on for ALL the matches against the other team; they must play on the same side on both tables.
- the team who wins the second flip will choose which table is played first or who gets to serve first. The team who loses this flip has the remaining option.

Then before each of the following matches, the losing team of the previous match will get to choose which table is played first or who gets to serve first. The other team has the remaining option.

The team who loses the first game of a match shall have the first serve to start the second game of that same match.

### **Exception: when 2 matches take place at the same time;**

- this may occur during the qualification phase
- or during the elimination phase due to time constraints

In these cases, the first match is played according to the same system as described above, BUT, teams **must not wait** for their players to be available for the next match. The next available match on the scoresheet must be played on the first available table.

**In short, whenever possible, 2 matches should be playing at the same time.**

For these matches, there is only one flip to decide who gets to serve first.

## WORLD CUP FORMAT - TEAMS - QUALIFICATION

- Participating countries are drawn in groups of 5 for the Men's event, and groups of 4 for the Women's, Junior and Senior events.

- Teams ranked 1 to 6 in the [Men's](#) (1 to 4 in the [Women's](#) and [Junior](#), and 1 and 2 in the [Senior](#)) Rankings of Nations will not play in the same group. Moreover, in the Men's event, teams ranked 7 to 12 will not play in the same group either.

- The winner of the 2010 Men's World Cup (USA) is seeded first for the 2011 Men's World Cup, and similarly, the winners of the 2010 Women's event (France), Junior event (Germany) and Senior event (USA) are seeded first for the 2011 competitions.

- Later on, if 2 countries cancel their participation within the same group, a draw will take place to determine which 4th country will join a group left with only 3 teams in the Men's event (2 in the Women's and Junior events).

- Within a group, each team will meet with all the other teams in its group.

In the **Women's, Junior and Senior World Cups**, the best 2 teams in each group will qualify for the next round, so 8 teams will go on to the elimination phase in the Women's and Junior events, and 4 in the Senior event.

As for the **Men's event**, the best 2 teams of each group will qualify for the next round, as well as the 4 best 3rd ranked teams of all 6 groups.

Taking into account last minute cancellations of teams whose visas are denied, some groups might end up with only 4 teams. If that's the case, in order to rank these 3rd ranked teams, their match results with the 5th ranked team of each group (none, if there are only 4 teams in a group) will not count towards qualification points, in order to ensure all groups have the same number of teams in terms of point calculations - as forfeited matches would give an advantage to groups with less teams.

These first 16 teams will go on to the elimination phase of Division 1. The remaining teams will take part in the Division 2 competition.

At the end of the competition, the last 2 teams of Division 1 will be placed in Division 2 for the following year, and the first 2 teams of the Division 2 competition will move up to Division 1.

- When 2 teams meet, they will play:

- 5 matches (= 10 games) in the Men's event, according to the following format: S-D-S-D-S where S stands for Singles and D for Doubles matches;

- 4 matches (= 8 games) in the Women's event according to the following format: D-S-D-S;

- 5 matches (= 10 games) in the Junior and Senior events, according to the following format: D-S-D-S-D.

- 2 matches take place at the same time, on the 2 tables at the teams' disposal.

- In the **MEN'S and WOMEN'S EVENTS**, players can only play one match, so there must always be 7 different names on each scoresheet in the Men's event and 6 in the Women's event.

- In the **JUNIOR and SENIOR EVENTS**, players play 2 matches; so there must always be 4 names on each scoresheet, repeated twice.

The 2 players who play the Singles matches **must** also play 1 Doubles match; i-e, the 2 Singles matches have to be played by 2 different players.

Also, the 1st Doubles and Singles matches must be played by 3 different players.

**See scoresheets for qualification matches:**

[Men's](#)  
[Women's](#)

[Junior](#)  
[Senior](#)

## WORLD CUP FORMAT - TEAMS - QUALIFICATION

Specific cases linked to the number of players in a team.  
The score of a forfeited match is 5-2.

### Men's event

- 1- 7 vs 7 : all matches are played
- 2- 6 vs 7 : S1 is forfeited
- 3- 6 vs 6 : S1 is not played
- 4- 5 vs 7 : D1 is forfeited
- 5- 5 vs 6 : D1 is forfeited ; S1 is played
- 6- 5 vs 5 : D1 is not played

### Women's event

- 1- 6 vs 6 : all matches are played
- 2- 5 vs 6 : S1 is forfeited
- 3- 5 vs 5 : S1 is not played
- 4- 4 vs 6 : D1 is forfeited
- 5- 4 vs 5 : D1 is forfeited ; S1 is played
- 6- 4 vs 4 : D1 is not played

### Junior and Senior events

- 1- 4 vs 4 : all matches are played
- 2- 4 vs 3 : D1 and S1 are forfeited
- 3- 3 vs 3 : D1 and S1 are not played

## WORLD CUP FORMAT - TEAMS - QUALIFICATION

• The names of the players for all the qualification matches must be provided by 6:00 pm on Thursday at the latest and no change of players will be allowed after that.

• A match consists of 2 games: one game on your table + 1 game on the other team's table.

• A game is won in 5 goals.

• At the end of the 5 matches (4 in the Women's event), points will be granted according to the number of games won by each team:

- when a team has won more than 5 games (4 in the Women's event), it is granted 2 points

- when a team has won 5 games (4 in the Women's event), it is granted 1 point

- when a team has won less than 5 games (4 in the Women's event), it is granted 0 point

- if 2 teams have scored the same number of points, the team that has won the most games comes first ;

- if both teams have won an equal number of games, the team that has the higher goal average comes first ;

- if both teams have the same goal average, the team that has scored the most goals is first.

See example in the chart below.

**Example:**

Ranking	Country	Points	Games		Goals		Goal Average	
			WON	LOST	WON	LOST		
1	Team 4	4	25	5	130	150		
2	Team 1	4	15	15	105	210		
3	Team 3	2	10	20	83	145	-62	eliminated
4	Team 2	2	10	20	71	133	-62	eliminated

**EUROSPORT - BROADCASTING PARTNER****[ LIVE ]****Friday, January 7<sup>th</sup>: 9:30pm to 11:30pm****Saturday, January 8<sup>th</sup>: 9pm to 11pm****Sunday, January 9<sup>th</sup>: 5pm to 7pm****[ Recorded ]**

Three 26-minute programs

**Total : 30h of broadcast!**

(rebroadcast included - live and recorded)

[www.eurosport.fr](http://www.eurosport.fr)**↻ BROADCAST IN 58 COUNTRIES****Asia and Pacific Countries**

1. Australia
2. Indonesia
3. Malaysia
4. Brunei
5. Hong Kong
6. Singapore
7. Fiji Islands
8. Maldive Islands
9. Myanmar
10. Tonga Islands
11. Philippines
12. Sri Lanka

**↻ 16 LANGUAGES, including**

**English**  
**French**  
**German**  
**Greek**  
**Hungarian**  
**Italian**  
**Polish**  
**Portuguese**  
**Romanian**  
**Russian**  
**Serbian**  
**Swedish**  
**Turkish**

**Western and Northern Europe**

1. Austria
2. Belgium
3. Denmark
4. Finland
5. France
6. Germany
7. Ireland
8. Iceland
9. Luxembourg
10. Netherlands
11. Norway
12. Sweden
13. Switzerland
14. United Kingdom

**Southern Europe and Mediterranean countries**

1. Cyprus
2. Spain
3. Greece
4. Italy
5. Lebanon
6. Malta
7. Portugal
8. Turkey

**Central and Eastern Europe and other countries**

1. Albania
2. Armenia
3. Azerbaijan
4. Belarus
5. Bosnia-Herzegovina
6. Bulgaria
7. Croatia
8. Czech Republic
9. Estonia
10. Georgia
11. Hungary
12. Kazakhstan
13. Latvia
14. Lithuania
15. Macedonia
16. Moldavia
17. Montenegro
18. Poland
19. Romania
20. Russia
21. Serbia
22. Slovakia
23. Slovenia
24. Ukraine

## WORLD CUP FORMAT - TEAMS - ELIMINATION

- When 2 teams meet in the elimination phase, they will play:
  - 5 matches in the **Men's event**, according to the following format: S-D-S-D-S;
  - 4 in the **Women's event** according to the following format: D-S-D-S;
  - 5 matches in the **Junior and Senior events**, according to the following format: D-S-D-S-D.

- Matches are played one at a time, except if delay has accumulated, in which case 2 matches will take place at the same time.

- A match is best of 3 games, first to 5, switching table after each game. In the 3rd game 1 ball is played on the first table, then players play 2 balls alternately on each table until there is a winner with a 2 point difference (no point limit).

- **EXCEPTION:** in Division 2 of the Men's event, a match consists of 2 games: one game on your table + 1 game on the other team's table.

A game is won in 5 goals.

This is also the case of some Division 1 matches, namely the 4 «9/12 matches» and the 2 «13/14 matches» in the Looser bracket.

- In the **MEN'S and WOMEN'S EVENTS**, players can only play one match, so there must always be 7 different names on each scoresheet in the Men's event and 6 in the Women's event.

- In the **JUNIOR and SENIOR EVENTS**, players play 2 matches; so there must always be 4 names on each scoresheet, repeated twice.

The 2 players who play the Singles matches **must** also play 1 Doubles match; i-e, the 2 Singles matches have to be played by 2 different players. Also, the 1st Doubles and Singles matches must be played by 3 different players.

- Specific cases linked to the number of players in a team (forfeited match = 5-2)

### Men's event

- 1- 7 vs 7 : all matches are played (*no extra Doubles match*)
- 2- 6 vs 7 : S1 is forfeited ; (*no extra Doubles match*)
- 3- 6 vs 6 : S1 is not played ; extra Doubles match in case of tie
- 4- 5 vs 7 : D1 is forfeited ; (*no extra Doubles match*)
- 5- 5 vs 6 : D1 is forfeited ; S1 is played ; (*no extra Doubles match*)
- 6- 5 vs 5 : D1 is not played ; extra Doubles match in case of tie

### Women's event

- 1- 6 vs 6 : all matches are played ; extra Doubles match in case of tie
- 2- 5 vs 6 : S1 is forfeited ; extra Doubles match in case of tie
- 3- 5 vs 5 : S1 is not played ; (*no extra Doubles match*)
- 4- 4 vs 6 : D1 is forfeited ; extra Doubles match in case of tie
- 5- 4 vs 5 : D1 is forfeited ; S1 is played ; extra Doubles match in case of tie
- 6- 4 vs 4 : D1 is not played ; (*no extra Doubles match*)

**ALL Extra Doubles matches consist of 1 game, first to 7, played as follows: 1 ball is played on the first table, then players play 2 balls alternately on each table until there is a winner with a 2 point difference (no point limit).**

They must be played by 2 players who have already played during the encounter, so there **CANNOT** be more than 7 different names on each scoresheet (6 in the Women's event).

### Junior and Senior events

- 1- 4 vs 4 : all matches are played
- 2- 4 vs 3 : D1 and S1 are forfeited
- 3- 3 vs 3 : D1 and S1 are not played

## WORLD CUP FORMAT - TEAMS - ELIMINATION

See scoresheets for elimination matches:

[Men's elimination Division 1](#)

[Men's elimination Division 2](#)

[Women's elimination](#)

[Junior elimination](#)

[Senior elimination](#)

See elimination charts for each category:

[Men's chart Division 1](#)

[Men's chart Division 2](#)

[Women's chart](#)

[Junior chart](#)

[Senior chart](#)

Note that there is **no match for third place**; instead there will be **2 bronze places**.

### Time between points

According to the ITSF Rules Book, players must wait five seconds between a goal scored and the beginning of the ready protocol.

However, this 5-second lapse is not long enough to show replays on TV between points.

**This is why for all matches being televised or recorded, the referee at the table will indicate when the ball may be put into play.**

**KOZOOM - PRODUCTION PARTNER**

Kozoom is a multimedia broadcasting and production company which specializes in table sports. With its 10 years of experience, this company, based in France, became well known by filming billiard tournaments throughout the world.

In April 2008, **Kozoom was the first company to record a billiard tournament - the Artistic Billiard World Championships - in high definition.**

In 2009 and 2010, Kozoom filmed the ITSF Table Soccer World Cup; the programs they produced were then broadcast on the Eurosport 2 TV channel.

[www.kozoomcorp.com](http://www.kozoomcorp.com)



## WORLD CHAMPIONSHIPS - QUALIFICATION

- 5 categories :
  - **Men:** players born between 1960 and 1991
  - **Women:** players born between 1960 and 1991
  - **Juniors** (18 and under\*): players born in 1992 or after - male and female
  - **Seniors** (50 and over): players born in 1959 or before - male and female
  - **Disabled Doubles** (no age limit): players in wheelchairs - male and female
- Top Seeds: the Top 4 players/teams in the 2010 ITSF Men's Singles/Doubles and Women's Singles/Doubles World Rankings will not play qualification matches.
  - [Men's Singles Ranking](#)
  - [Men's Doubles Ranking](#)
  - [Women's Singles Ranking](#)
  - [Women's Doubles Ranking](#)
- In the Men's and Women's' Singles/Doubles categories, **only the first 32 players or teams will qualify**.  
In the Junior and Senior Singles/Doubles categories, and in the Disabled Doubles category, **only the first 16 players or teams will qualify**.
- A match is ONLY 1 game, first to 7 (the 2-point difference rule does NOT apply).
- Each player will compete against 6 to 8 (TBD) different opponents and will play at least 50% of their matches on their table of choice (more where both players have chosen the same table).
- 1 point is awarded for each game won.
- A coin flip shall precede the start of each match.  
The player who wins the flip has the choice of table side or first serve.  
The player who loses the flip has the remaining option.

## WORLD CHAMPIONSHIPS - ELIMINATION

- A match is best of 5 games switching table after each game, first to 5 on each game.
  - In the 5th game, 1 ball is played on the first table, then players play 2 balls alternately on each table until there is a winner with a 2 point difference (no point limit).
  - 2 coin flips shall precede the start of each match:
    - the player who wins the first flip gets to choose the side of the table he/she will play on for ALL the games in that match; he/she must play on the same side on both tables.
    - the player who wins the second flip will choose which table is played first or who gets to serve first. The player who loses this flip has the remaining option.
- There is **no match for third place**; instead there will be **2 bronze places**.

**PRIZES**

## Over € 50 000 worth of prizes! No entry fees!

This year again, players won't have to pay any entry fees to take part in the World Cup.

This is meant to help all players and especially those who come from far away and have high travel expenses.

Also, as last year, the ITSF has committed itself to allocating prizes more fairly, in order to make sure that «grass root» table soccer can grow at the same time as high-level competitive table soccer.

### ⇒ Travel Packages - € 25 000

Up to 62 qualified players can benefit from a travel package to attend the World Cup (each package amounts to € 250 to € 800 depending on where they reside).

Check which players are entitled to a [travel package](#) and in which amount.

### ⇒ WCS Packs - over € 5 000

Apart from medals, the first 4 winners in each World Championships category (Men's, Women's, Junior, Senior and Disabled) are awarded World Championship Series (WCS) packages so they can attend WCS events during the 2011 Tour.

Each time, packages are awarded to players who are not members of the federation awarding the package, so that competitors are encouraged to attend other WCS events than the one taking place in their country.

Please note that these packages are not transferable to other players.

### ⇒ Tables - over € 20 000

16 tables are awarded to ITSF member federations:

- to the Top 3 federations according to the medal count in the World Championships rankings (2 tables each) - if countries are still tied, the 2010 World Rankings of Nations will be used
- to 2 federations in countries with low financial resources (3 tables each)
- to 2 federations as acknowledgment of their work to develop table soccer in their country (2 tables each)

In each of the above cases, the tables donated to federations will not be their "home" tables; the brands of tables will be determined for each federation by the ITSF Sports Commission.

## Contact us

+33 (0)2 40 47 90 84

✉ : **International Table Soccer Federation**  
27 rue Adolphe Moitié  
44000 Nantes  
FRANCE

*(from Monday to Friday 9:00 am - 12:00 pm – 1:30 pm - 4:30 pm)*

☎: +33 (0)2 40 47 90 84

📠: +33 (0)2 40 20 44 59

@: [info@table-soccer.org](mailto:info@table-soccer.org)

🌐: [www.table-soccer.org](http://www.table-soccer.org)

🌐: [www.itsfworldtour.com](http://www.itsfworldtour.com)

