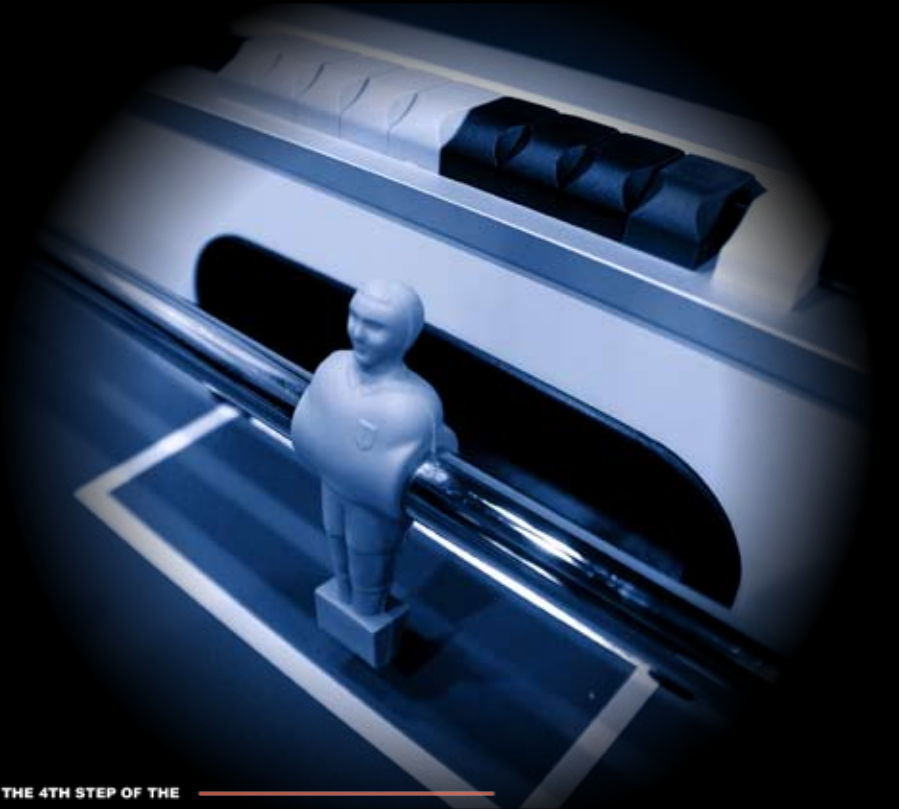


INFORMATION

14 - 17 OCTOBER, 2010
PRUHONICE - PRAGUE

information on www.itsfworldtour.com



THE CFO PRESENTS THE 4TH STEP OF THE

WORLD CHAMPIONSHIP SERIES

CZECH REPUBLIC 2010

TABLE-SOCCER

WHAT'S NEW?

WCS An identical format for all WCS events
In terms of schedule, information package, prizes, competition format



A better redistribution of money
More players to recoup their costs via prize money and 100% of the money guaranteed by ITSF



Final matches broadcast on TV
On Eurosport 2 (broadcasts in nearly 50 million homes)
3 x 26' programs rebroadcast 3 times - total of 6 hours

15 At least

15 events guaranteed at each WCS event

www. A new dedicated website
For World Tour information and live results



A handle change system
To help players adapt their game more easily on new tables

ITSF
World  **Tour**

TABLE OF CONTENT

01 INTRODUCTION

p4 The World Championship Series events

p4 The Roberto Sport WCS event

02 TOURNAMENT INFORMATION

p5 Registration

p5 Licenses

p6 Rules and match format

p6 Top seeds

p6 Categories

p7 Package content

p7 Fees outside packages

p8 Prizes

p9 100% prize money guaranteed by the ITSF

p10 National Teams Competition

p11 Eurosport - broadcasting partner

p12 Kozoom - production partner

p13 Schedule

p16 Handle change system

p17 Partners

p18 How to get there

03 CONTACT INFORMATION

p19 ITSF

www.itsfworldtour.com



ČFO

Česká foosballová organizace

✉ : Prazska 16
102 21 Prague 10
Czech Republic

@ : registrationwcs2010@foosball.cz

🌐 : www.foosball.cz



01 INTRODUCTION

THE WORLD CHAMPIONSHIP SERIES EVENTS

There are 5 World Championship Series (WCS) events in the annual ITSF Tour, one on each ITSF Official table (Tornado, Tecball, Roberto Sport, Garlando, Bonzini).

Each of these events is a "mini World Championships event" on a single table, as opposed to the end-of-the-Tour World Championships which take place on all 5 tables.

The first 3 Open Singles winners of each WCS event, as well as the winners of the Women's Singles, Junior Singles and Senior Singles categories are automatically qualified for the World Championships.

These 6 players also benefit from a travel package to attend the World Championships (each package amounts to € 250 to € 800 depending on where they reside).

11 international titles are awarded at each WCS event:

01. Open Singles
02. Open Doubles
03. Junior Singles
04. Junior Doubles
05. Senior Singles
06. Senior Doubles
07. Women's Singles
08. Women's Doubles
09. Disabled Doubles
10. Men's National Team
11. Women's National Team

THE ROBERTO SPORT WCS EVENT

The Czech Table Soccer Federation (CFO) is proud to invite you to the 2010 ROBERTO SPORT WCS event which will take place for the first time at:

Club Hotel Praha Pruhonice
Pruhonice 400
Praha - Pruhonice, CZECH REPUBLIC

www.club-hotel-praha.cz

The main partners associated to this event are the Roberto Sport company, the City of Prague, the Eurosport 2 TV Channel and the Kozoom production company.

About 400 competitors from 15 countries and many spectators will attend this major event.

Apart from the main events, other competitions are also organized:

- **D.Y.P.** (Draw Your Partner)
- Singles events by rating categories : **Pro, Semi-Pro, Rookie**
- Doubles events by rating categories : **Pro, Semi-Pro, Rookie**

The Roberto Sport company will provide 80 tables for the competition.



02 TOURNAMENT INFORMATION

REGISTRATION

The competitions are strictly reserved to ITSF licensees.

Players have to register **10 days at the latest before the event.**

All players will be able to check their registration on the ITSF website:
www.itsfworldtour.com
at least 10 days before the event.

The Pro, Semi Pro and Rookie Singles competitions are exclusively open to those players ranked in those categories.

For Doubles events: a player may take part in a competition in a higher category than his/her own if his/her partner is ranked in that category.

See next page for details on these 3 categories.

Players have to choose the registration sheets corresponding to their category and they must write down their license number on it.
(Otherwise the registration will be null and void and the registration payment will be sent back)

Sport dress is compulsory for all players.
National team players must wear their national outfit during the National Teams Competition and during ceremonies.



www.table-soccer.org/rules/dresscode.php

LICENSES

Only those players registered in the ITSF database with the FAST software will be allowed to compete in ITSF events.

Players must have a player's license issued by their own federation – they can have one only. Please contact your federation for details.

Czech players have to be registered with the ČFO.

www.foosball.cz

The deadline for registration is:

**MONDAY, OCTOBER 4th
2010 INCLUDED**

*(the letter or e-mail must be
postmarked by this date)*

*No registration will be taken into
account after this date.*

ČFO

Česká foosballová organizace

✉ : Prazska 16
102 21 Prague 10
Czech Republic

@ : registrationwcs2010@foosball.cz

🌐 : www.foosball.cz

RULES AND MATCH FORMAT

All events in the ITSF World Tour are played according to the international Game Rules, to be found in several languages on the ITSF website:

www.table-soccer.org/rules

Qualification

- All qualification matches are played in a single 7-point game.
- The FAST software takes into account the level of a player's opponents when determining qualification matches, in order for the automatic draw to be fair to all players.

Elimination

- All matches of the elimination phase, except in the DYP events, are played with the following format : Single KO, best of 5 games, first to 5 in each game, with a 2-point difference in the last game up to a maximum of 8 points.
- DYP events : best of 3 games, with a 2-point difference in the last game up to a maximum of 8 points.

TOP SEEDS

Women's competitions

- If there are **more than 32 competitors**: there shall be 4 Top Seeds (TS) according to the ITSF World Ranking + 2 TS determined by the host federation (= wild cards). These 6 Top Seeds don't play qualification matches.
- If there are **32 competitors or less**: there shall be 4 Top Seeds (TS) according to the ITSF World Ranking. These TS play qualification matches but do not play against each other during that qualifying phase.

Open competitions

- There shall be 8 Top Seeds (TS) according to the ITSF World Ranking + 4 Top Seeds determined by the host federation (= wild cards). These 12 Top Seeds don't play qualification matches.

www.table-soccer.org/rankings

- In the Doubles event, points from both partners are added for the seeding.

CATEGORIES

Specific conditions

- **Women and Senior players** (50 years old and older on December 31st, 2009) must choose between playing in their category (WS, WD, SS, SD) or playing in the Open events (OS, OD). Exceptionally, if there are very few competitors in their category (8 or less) players/teams will be allowed to compete in both events.

In that case, the competition in their category shall start 2 hours after the start of the elimination matches in the Open category and shall be played in Single KO. In case of time conflicts when launching matches, the Open event must be given priority. Also if there are 8 or less players/teams in that category (minimum 3), only 50 % of the prize money will be paid out to players.

- **Junior players** (under 18 years old on December 31st, 2009) can play both the Junior Singles and Open Singles (they take place on different days) but not the Singles per category competitions (Rookie, Pro and Semi Pro) nor the Mixed Doubles. Also, they have to choose between Junior Doubles and Open Doubles, except if there are 8 or less competitors in their category. In that case, if at least 1 team wants to play in the Open event, then the rule above is implemented (Junior Doubles in SKO, etc).

Rating categories

- The ITSF has determined **3 rating categories**:

Pro = ITSF Pro Players

Semi Pro = non Czech male players

Rookie = all remaining players

- In any case, the Top 150 players in the **ITSF Combined Rankings** (Singles + Doubles) are considered Pro, and all international players are at least Semi-Pro. Female players can choose in which category they want to compete.

- 4 weeks before the start of the event, the final rankings to be used are displayed on the ITSF Tour website - changes that take place in the rankings after this date will not be taken into consideration. [List of Pro players](#) as posted on September 16th, 2010.

- For Doubles events: a player may take part in a competition in a higher category than his/her own if his/her partner is ranked in that category.

PACKAGE CONTENT

Pro, Semi-Pro and Rookie packages include:

- 1 Singles event*
- 1 Doubles event**
- Mixed Doubles
- 1 Singles event by rating category
- 1 Doubles event per rating category

(*) 1 Singles event = Open, Women's, Junior or Senior Singles

(**) 1 Doubles event = Open, Women's, Junior or Senior Doubles

PACKAGE COST

(including tournament fee)

Pro	140 €
Semi-Pro	120 €
Rookie	100 €
Women	100 €
Juniors	30 € (Pro 100 €)
Seniors	according to their category (P/SP/R)
Disabled	Free

Week-end Special!

If you start your first event on Saturday, the tournament fees are reduced to €15, which includes the € 5 euro referee fee.

FEES OUTSIDE PACKAGES

COST PER COMPETITION

Pro	50 €
Semi-Pro	40 €
Rookie	30 €
Women	30 €
Juniors	0 € (Pro 30 €)
DYP	10 €

+ Tournament fee 30 €

30 € TOURNAMENT FEE

This fee is included in the packages. In the case of fees outside packages, the tournament fee is added only once.

The tournament fee includes the following:

Registration fee: 25 €

Referee fee: 5 €

The tournament organizers use the referee fee to pay the referees who officiate during their event.

Referees receive between € 2 and € 5 per game depending on their level and for elimination matches only.

**DOWNLOAD
YOUR
REGISTRATION
SHEETS FROM THE
ITSF WORLD
TOUR WEBSITE**

Why pay a referee fee?

The referee fee is meant to motivate players to become referees. Tournament organizers use this money to pay referees who officiate during their event.

For more information, visit the ITSF website:

www.table-soccer.org/rules

This fee does not guarantee players that they will have a referee at all times; it is mathematically impossible to have enough referees in the first rounds of a competition since most referees are also players. If no referee is available, the match must go on or else players/teams will be sanctioned (they may both get disqualified) for delaying the competition. However, it is clearly stated in the Referee Code that when a certified ITSF referee registers to play in a tournament, he/she is under the obligation to officiate (except in specific cases).

All referees have to wear ITSF referee shirts displaying their referee level. See referee dress code on: www.table-soccer.org/rules/dresscode.php

Official Clinics for referees will be held at 9:00 pm on the first 3 days of the event.

PRIZES

* WCh packages: these players are automatically qualified for the World Championships; they also benefit from a travel package to attend the WCh (each package amounts to € 250 to € 800 depending on where they reside).

OPEN

+ ITSF medals for first 3

<i>Singles</i>		<i>Doubles</i>	
1	€ 1000 + WCh package*	1	€ 2000
2	€ 650 + WCh package*	2	€ 1400
3	€ 400 + WCh package*	3	€ 900
4	€ 300	4	€ 600
5/8	€ 200	5/8	€ 400
9/16	€ 125	9/16	€ 220
17/32	€ 80	17/32	€ 140

WOMEN'S

- see conditions p.6

+ ITSF medals for first 3

<i>Singles</i>		<i>Doubles</i>	
1	€ 350 + WCh package*	1	€ 550
2	€ 250	2	€ 350
3	€ 150	3	€ 220
4	€ 150	4	€ 220
5/8	€ 100	5/8	€ 150

SENIOR

- see conditions p.6

+ ITSF medals for first 3

<i>Singles</i>		<i>Doubles</i>	
1	€ 200 + WCh package*	1	€ 300
2	€ 150	2	€ 200
3	€ 70	3	€ 100
4	€ 70	4	€ 100

DISABLED DOUBLES / JUNIOR

- see conditions p.6

+ ITSF medals for first 3

<i>Singles</i>		<i>Doubles</i>	
1	Trophy + WCh package*	1	Trophy
2	Trophy	2	Trophy
3	Trophy	3	Trophy

MIXED DOUBLES

1	€ 300
2	€ 200
3	€ 150
4	€ 150
5/8	€ 70

Daily DYP x3 days

1	€ 200
2	€ 150
3	€ 70
4	€ 70

PRO

<i>Singles</i>		<i>Doubles</i>	
1	€ 300	1	€ 550
2	€ 200	2	€ 350
3	€ 125	3	€ 200
4	€ 125	4	€ 200
5/8	€ 75	5/8	€ 80

SEMI-PRO

<i>Singles</i>		<i>Doubles</i>	
1	€ 200	1	€ 350
2	€ 125	2	€ 200
3	€ 75	3	€ 120
4	€ 75	4	€ 120
5/8	€ 50	5/8	€ 60

ROOKIE

<i>Singles</i>		<i>Doubles</i>	
1	€ 125	1	€ 200
2	€ 75	2	€ 150
3	€ 50	3	€ 80
4	€ 50	4	€ 80

100% PRIZE MONEY GUARANTEED BY THE ITSF

REGISTRATION FEE (packages)		TOURNAMENT FEE INCLUDED*	REGISTRATION FEE (outside package)	
Pro	€ 140	€ 30	Pro	€ 50
Semi-pro	€ 120	€ 30	Semi-pro	€ 40
Rookie	€ 100	€ 30	Rookie	€ 30
Junior	€ 30 - pro: €100	€ 30	Women	€ 30
Senior	as ranked	€ 30	+ Tournament fee	€ 30
Women	€ 100	€ 30		
Disabled	Free	Free		
			DAILY DYP	
			€ 10	

*This € 30 tournament fee includes the € 5 euro referee fee.

➔ 3 rating categories: Pro, Semi Pro and Rookie - see page 6

TOTAL € 34 595 (\$ 42 685)

Cash	€ 28 095
Trophies	€ 2 500
WCh travel	€ 3 000
ITSF medals	€ 1 000

➔ Specific conditions for Women, Seniors and Juniors - see page 6

➔ **Week-end Special:** if you start your first event on Saturday, the tournament fees are reduced to €15, which includes the € 5 euro referee fee.

➔ The € 34 595 total amount (including € 28 095 cash) is guaranteed by the ITSF for each WCS event.



NATIONAL TEAMS COMPETITION (NTC)

What's new in 2010

- - Women's event (min. 3 teams): 4 players + 2 reserve / Minimum 3 players
- Men's event (min. 3 teams): 7 players + 2 reserve / Minimum 4 players

➤ Competition format

- Men's - 5 matches: S-D-S-D-S (S = Singles ; D = Doubles)
- Women's - 3 matches: S-D-S

All matches are played in a single 7-point game with a 2-point difference up to a maximum of 10 points.

Players can only play one match (except in the case of an extra doubles match), so there must be 7 different names on each scoresheet (4 in the Women's event).

See scoresheets: [Men's](#) [Women's](#)

➤ **New at the Roberto Sport WCS event:** in the qualification phase, each national team meets 3 other teams at random (draw managed by FAST).

- 8 teams qualify for next round (4 in the Women's event)
- The host country and the best ranked nations* in the ITSF [Men's rankings of nations](#) and [Women's rankings of nations](#) will have "protected" status.
- These protected teams play in qualifiers but don't meet each other.
- Non-protected teams will not meet more than 1 protected team in qualifiers.

* exact number depending on the number of competing teams

➤ Specific cases - Team captains must check the number of players in the opposing teams when they register their team players at the players' station, to make sure the scoresheets are filled up taking into account the following cases:

- If there are 6 players in a Men's team (3 in a Women's team), they forfeit the 1st Singles match to be played on the scoresheet;
- If there are 5 players in a Men's team, they forfeit the 1st Doubles match;
- If there are 4 players in a Men's team, they forfeit the 1st Singles and Doubles matches
- When a 6-player team plays against a 5-player team, only the 1st Doubles match is forfeited - the 1st Singles match is played.

- An extra Doubles match is played in case of a 2-2 tie (1-1 in the Women's event) when:
 - >> a 5 or 6-player team plays against a 4-player team in the Men's event
 - >> 2 teams of 6 players or 2 teams of 5 players play against each other in the Men's event (2 teams of 3 players in the Women's event).

NTC Schedule - Thursday, October 14th

➤ **12:30 pm** - Meeting with team captains

- FAST draw results and match schedule for each team
- Information on competition format and deadline for entering rosters : **2:00 pm for the first encounter - no blank scoresheets handed out**

➤ **5:00 pm** - Presentation of the national teams at the Opening Ceremony.

➤ **5:30 pm** - Start of competitions - all matches (3 or 5) take place at the same time - each encounter takes about half an hour

Team captains enter the names of their team players **15 minutes at the latest before the start of the next encounter**. There will be no call and no reminder to team captains regarding this. If the team captains fail to do so, **FAST will automatically register the roster of the last played encounter**.

➤ **7:00 pm** - End of qualification phase

Team captains must enter their team rosters for the elimination matches **15 minutes at the latest after they know who their next opponent is**. There will be no call and no reminder to team captains regarding this. If the team captains fail to do so, **FAST will automatically register the roster of the last played encounter**.

➤ **7:15 pm (at the latest)** - Start of elimination

Women's semi-final: matches take place one at a time
Men's quarter final: the first 2 matches take place at the same time, then one at a time.

➤ **8:00 pm** : Women's final (or Men's semi-final – whichever is ready to be played)

And 1 encounter every hour in order to have the Men's final at 11:00 pm.
All matches take place one at a time, except for competitions for the 3rd place where all matches take place at the same time.

EUROSPORT - BROADCASTING PARTNER

A member of the TF1 group, the Eurosport 2 channel gathers the largest audiences of the cable (source: Sport Strategies), which makes it one of the major actors of sport in Europe and worldwide.

The Eurosport 2 channel broadcasts in nearly
50 million homes.

ITSF benefits from a broadcasting partnership in the form of
26' highlight programs
recalling each step of the ITSF World Tour.

www.eurosport.fr

6 hours of programs
dedicated to the 2010 WCS events

(including 3 rebroadcast of each program)

**BROADCAST IN 58 COUNTRIES****Asia and Pacific Countries**

1. Australia
2. Indonesia
3. Malaysia
4. Brunei
5. Hong Kong
6. Singapore
7. Fiji Islands
8. Maldiv Islands
9. Myanmar
10. Tonga Islands
11. Philippines
12. Sri Lanka

11 LANGUAGES

English
French
German
Greek
Hungarian
Italian
Polish
Romanian
Russian
Serbian
Turkish

Western and Northern Europe

1. Austria
2. Belgium
3. Denmark
4. Finland
5. France
6. Germany
7. Ireland
8. Iceland
9. Luxembourg
10. Netherlands
11. Norway
12. Sweden
13. Switzerland
14. United Kingdom

Southern Europe and Mediterranean countries

1. Cyprus
2. Spain
3. Greece
4. Italy
5. Lebanon
6. Malta
7. Portugal
8. Turkey

Central and Eastern Europe and other countries

1. Albania
2. Armenia
3. Azerbaijan
4. Belarus
5. Bosnia-Herzegovina
6. Bulgaria
7. Croatia
8. Czech Republic
9. Estonia
10. Georgia
11. Hungary
12. Kazakhstan
13. Latvia
14. Lithuania
15. Macedonia
16. Moldavia
17. Montenegro
18. Poland
19. Romania
20. Russia
21. Serbia
22. Slovakia
23. Slovenia
24. Ukraine

KOZOOM - PRODUCTION PARTNER

Kozoom is a multimedia broadcasting and production company which specializes in table sports. With its 10 years of experience, this company, based in France, became well known by filming billiard tournaments throughout the world.

In April 2008, **Kozoom was the first company to record a billiard tournament - the Artistic Billiard World Championships - in high definition.**

In 2009 and 2010, Kozoom filmed the ITSF Table Soccer World Cup as well as various WCS events; the programs they produced were then broadcast on the Eurosport 2 TV channel.

www.kozoomcorp.com



THURSDAY 14

Competition	Qualification start	Seeded players	Nb of Q matches	Qualified players	Elimination start	Elimination format	Break	Finals (estimate)
Doubles events by rating categories (Pro; SemiPro; Rookie)	9:30 AM	-	6*	80%**	12:00 PM	SKO - 3/5	5:00 PM	4:00 PM****
DYP for eliminated players	-	-	-	-	4:00 PM	SKO - 2/3	5:00 PM	9:00 PM
5:00 PM - Opening Ceremony (stop calling matches at 4:00 PM)								
National Teams Competition	5:30 PM	*****	3	8 (Women's 4)	7:15 PM	SKO	-	11:00 PM

FRIDAY 15

Competition	Qualification start	Seeded players	Nb of Q matches	Qualified players	Elimination start	Elimination format	Break	Finals (estimate)
Open Singles	9:30 AM	12	8*	80%**	2:00 PM	SKO - 3/5	6:00 PM	10:00 PM
Women's Singles	9:30 AM	See p6	6*	100%***	2:00 PM	SKO - 3/5	6:00 PM	7:00 PM
Senior Singles	9:30 AM	-	6*	100%***	2:00 PM	SKO - 3/5	6:00 PM	5:00 PM
DYP for eliminated players	-	-	-	-	4:00 PM	SKO - 2/3	6:00 PM	9:00 PM
6:00 PM - Award Ceremony for Doubles events and National Teams Competition + Presentation of Singles' finalists on the stage (photos for all)								

SATURDAY 16

Competition	Qualification start	Seeded players	Nb of Q matches	Qualified players	Elimination start	Elimination format	Break	Finals (estimate)
Open Doubles	9:30 AM	12	8*	80%**	1:00 PM	SKO - 3/5	6:00 PM	10:00 PM
Women's Doubles	9:30 AM	See p6	6*	100%***	1:00 PM	SKO - 3/5	-	7:00 PM
Junior Doubles	9:30 AM	-	6*	100%***	1:00 PM	SKO - 3/5	-	6:00 PM
Senior Doubles	9:30 AM	-	6*	100%***	1:00 PM	SKO - 3/5	-	5:00 PM
Disabled Doubles	9:30 AM	-	6*	100%***	1:00 PM	SKO - 3/5	-	4:00 PM
DYP for eliminated players	-	-	-	-	4:00 PM	SKO - 2/3	6:00 PM	9:00 PM
6:00 PM - Award Ceremony for Singles events + Presentation of Doubles' finalists on the stage (photos for all)								

SUNDAY 17

Competition	Qualification start	Seeded players	Nb of Q matches	Qualified players	Elimination start	Elimination format	Break	Finals (estimate)
Singles events by categories	9:30 AM	-	6*	80%**	1:00 PM	SKO - 3/5	-	8:00 PM
Junior Singles	9:30 AM	-	6*	100%***	2:00 PM	SKO - 3/5	6:00 PM	6:00 PM
Mixed Doubles	9:00 AM	-	4	100%***	1:00 PM	SKO - 3/5	-	7:00 PM
Awards to be presented to winners at the end of each competition								

* The number of qualification matches will depend on the number of players and tables, to make sure eliminations matches start on time.

** 80 % of qualified players BUT the maximum number can not be more than 4 times the number of AVAILABLE tables for the final phases.

*** In order for players to be qualified for the elimination phase, they have to have taken part in at least half of their matches in the qualification phase.

**** If finals can not be played at 4:00 pm, they will resume on Friday at 1:00 pm.

***** The number of protected teams depends on the number of registered teams.

SCHEDULE

THURSDAY 14

🕒 9:30 am

Start of qualification phase for Doubles events by rating categories (Pro; SemiPro; Rookie)

🕒 12:00 pm

End of qualification and start of elimination – Single KO

🕒 12:30 pm

Meeting with team captains and FAST draw results for the National Teams Competition

🕒 2:00 pm

Deadline for entering names of team players for the first qualifier in the National Teams Competition

🕒 4:00 pm

Daily DYP for eliminated players – SKO
End of registration 15 mn before start
No national teams' players allowed in this DYP

🕒 4:00 pm

Last call for Doubles events by rating categories – matches that are not finished will resume on Day 2 at 1:00 pm

🕒 5:00 pm

Opening Ceremony: presentation of national teams

🕒 5:30 pm

Start of the National Teams Competition

🕒 9:00 pm

Official Clinic for referees

FRIDAY 15

🕒 9:30 am

Qualification matches for Singles categories: Open, Women's and Senior (if there are enough competitors)

🕒 2:00 pm

Elimination matches – SKO

🕒 4:00 pm

Daily DYP for eliminated players – SKO
End of registration 15 mn before start

🕒 6:00 pm

Award Ceremony for Doubles events by rating categories and National Teams Competition
+ Presentation of the remaining players of the Open Singles competitions

🕒 7:00 pm

Elimination matches resume up to finals

🕒 9:00 pm

Official Clinic for referees

SATURDAY 16

9:30 am

Start of qualification phase for all Doubles categories: Open, Women's, Junior, Senior and Disabled (if there are enough competitors):

1:00 pm

Elimination matches in Single KO

4:00 pm

Daily DYP for eliminated players – SKO
End of registration 15 mn before start

6:00 pm

Award Ceremony for Singles events
+ Presentation of the remaining players of the Doubles competitions

7:00 pm

Elimination matches resume up to finals

9:00 pm

Official Clinic for referees

SUNDAY 17

9:00 am

Start of qualification phase for Mixed Doubles

9:30 am

Start of qualification phase for Singles events by rating categories (Pro; SemiPro; Rookie) and Junior Singles

1:00 pm

Start of elimination for Mixed Doubles and Singles events by rating categories – SKO

2:00 pm

Start of elimination for Junior Singles - SKO

Awards to be presented to winners at the end of each competition.

TST - HANDLE CHANGE SYSTEM



At the 2010 and 2011 WCS events, the ITSF is implementing the use of the TST handle change system.

Visit the TST website at :

www.tst-systems.com

- In all these events, tables will be set up without handles, so that the TST Company can install its handle adaptors on all tables one day before the tournament start.
- Competitors will play exclusively with the handles and handle change system provided by the TST Company.
- Players who do not yet have their own handles will be able to rent some from the TST Company.

Handles for rent:

2 euros per handle

PARTNERS



www.robortosport.it



ČESKÁ FOOSBALLOVÁ ORGANIZACE

www.foosball.cz



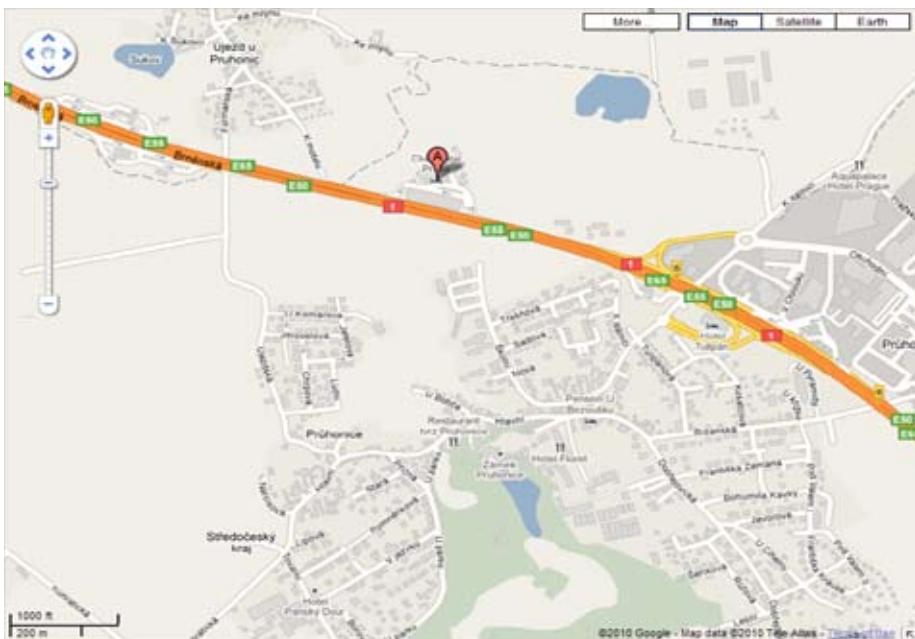
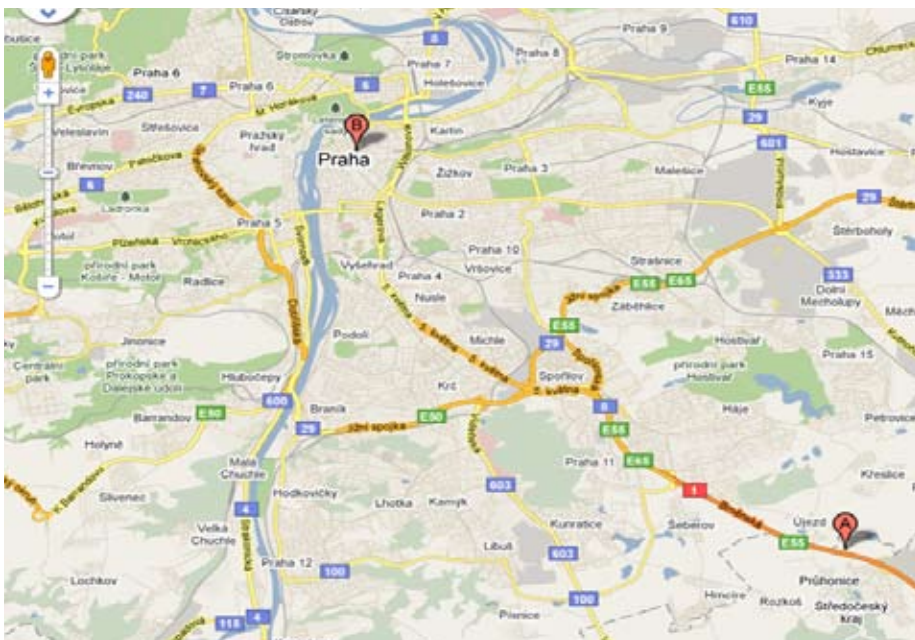
www.kozoomcorp.com



www.prague.com



www.eurosport.fr



FLIGHT

Prague Airport Destinations

TRAIN

Hlavní Nadraží station (Prague main station)

TOURIST OFFICE

☎ : +420 221 714 444
Mon-Fri, 9-12 am / 1-4 pm
www.praguewelcome.cz/en
tourinfo@pis.cz

PARKING

Free parking spaces

GPS Coordinates

ADDRESS

Pruhonice 400
Prague - Pruhonice
CZECH REPUBLIC
www.club-hotel-praha.cz

HOW TO GET THERE

From Prague's Airport

The best way to go the Club Hotel Praha is to take a taxi.

Prague airport transfers - Transport has to be booked in advance or upon arrival. This company has fixed prices. To book, call number 800 870 888 (free of charge in Prague). Average price from the airport to the hotel is 750,- CZK (approx. 30€)

AAA Radiotaxi - These taxis are parked at the airport; it is not necessary to pre-book. This company does not have fixed prices; average price from the airport to the hotel is 1100,- CZK (approx. 44€).

By car

From Brno to Prague - Club Hotel Praha is situated on kilometer 6 on highway D1. Do **not** take the exit to the city of Pruhonice on Km 6. Pass this exit and take the separate one to the hotel.

From Prague to Brno - Take the exit to the city of Pruhonice on Km 6, pass under the highway in the opposite direction (to Prague) and take the separate exit to the hotel.

By public transportation

Take bus 119 to *Dejvická* metro station (Line A), then take the metro to *Muzeum* station. Switch to Line C, go to *Opatov* station and take bus 363 to *Pruhonice* station. The hotel is a few minutes' walk from the station.



Contact us

+33 (0)2 40 47 90 84

✉ : **International Table Soccer Federation**
27 rue Adolphe Moitié
44000 Nantes
FRANCE

(from Monday to Friday 9:00 am - 12:00 pm – 1:30 pm - 4:30 pm)

☎: +33 (0)2 40 47 90 84

📠: +33 (0)2 40 20 44 59

@: info@table-soccer.org

💻: www.table-soccer.org

💻: www.itsfworldtour.com

